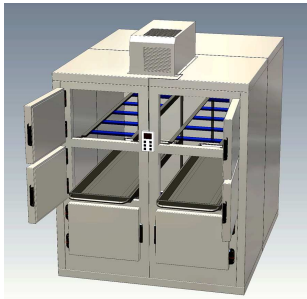


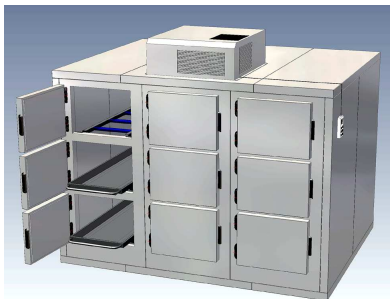
# Morgue refrigeration unit with small hatches 3-levels KZM 40/0300 – KZM 40/01500



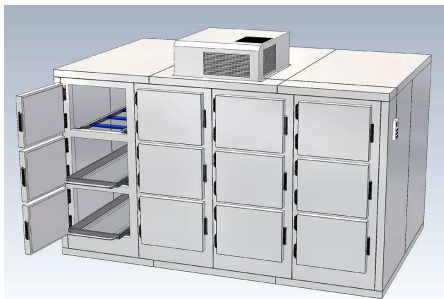
Morgue refrigeration unit KZM 40/0300  
To storage 3 body trays in 3 levels  
3 hatches 680 x 500 mm  
Made of 80 mm CFC -free polyurethane rigid  
Foam, coated outside steel  
Dimensions W/D/H: 1210 x 2260 x 2110 mm  
Article No.: 040.040.010.



Morgue refrigeration unit KZM 40/0600-3  
To storage 6 body trays in 3 levels  
6 hatches 680 x 500 mm  
Made of 80 mm CFC -free polyurethane rigid  
Foam, coated outside steel  
Dimensions W/D/H: 1910 x 2260 x 2110 mm  
Article No.: 040.040.020



Morgue refrigeration unit KZM 40/0900  
To storage 9 body trays in 3 levels  
9 hatches 680 x 500 mm  
Made of 80 mm CFC -free polyurethane rigid  
Foam, coated outside steel  
Dimensions W/D/H: 2960 x 2260 x 2110 mm  
Article No.: 040.040. 030



Morgue refrigeration unit KZM 40/01200  
To storage 12 body trays in 3 levels  
12 hatches 680 x 500 mm  
Made of 80 mm CFC -free polyurethane rigid  
Foam, coated outside steel  
Dimensions W/D/H: 3660 x 2260 x 2110 mm  
Article No.: 040.010. 028

**KUGEL Medizintechnik Vertriebs GmbH**  
Hermann-Köhl-Str. 2A  
DE - 93049 Regensburg / Germany

Phone +49/941/208648-0  
Fax +49/941/208648-29  
[www.KUGEL-medical.de](http://www.KUGEL-medical.de)



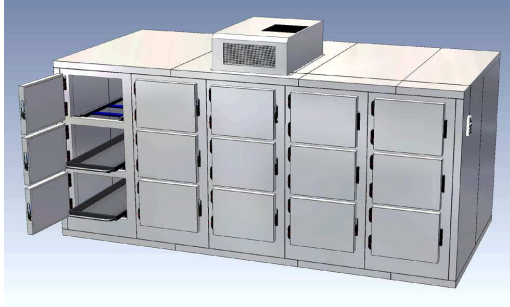
**TekEquipment™**

Ph: 1300 368 138

[www.tekequipment.com.au](http://www.tekequipment.com.au)

[info@tekequipment.com.au](mailto:info@tekequipment.com.au)

## Morgue refrigeration unit with small hatches 3-levels KZM 40/0300 – KZM 40/01500



Morgue refrigeration unit KZM 40/01500  
To storage 15 body trays in 3 levels  
15 hatches 680 x 500 mm  
Made of 80 mm CFC - free polyurethane rigid  
Foam, coated outside steel  
Dimensions W/D/H: 4535 x 2260 x 2110 mm  
Article No.: 040.040. 050

**KUGEL Medizintechnik Vertriebs GmbH**  
Hermann-Köhl-Str. 2A  
DE - 93049 Regensburg / Germany

Phone +49/941/208648-0  
Fax +49/941/208648-29  
[www.KUGEL-medical.de](http://www.KUGEL-medical.de)



**TekEquipment™**

Ph: 1300 368 138

[www.tekequipment.com.au](http://www.tekequipment.com.au)

[info@tekequipment.com.au](mailto:info@tekequipment.com.au)